

PRODUCTS

CUSTOM BACKSPLASHES

- CUT-OUTS
- TRIM STRIPS



PRODUCT: Backsplash, Pattern 1-HM
ALLOY: Stainless Steel - type 304 - 24 gauge



CUSTOM **WALL PANELS**
BEAUTIFULLY FINISHED CORNERS

WALL CLADDING



PROJECT: Baang Restaurant - Long Island, NY
PRODUCT: Wall Panels, Pattern 1-ES
ALLOY: Copper - 24 oz.



CUSTOM FABRICATED
COUNTERTOPS

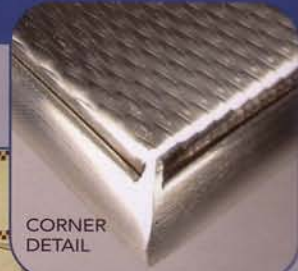
APPLICATIONS

ELEVATOR

INTERIORS AND DOORS



PRODUCT: Elevator Interior, Pattern 5-WL
ALLOY: Stainless Steel - type 304
- 20 gauge [doors] - 16 gauge [walls]



CORNER
DETAIL

PRODUCT: Partitions, Pattern 5-WL
ALLOY: Stainless Steel
- type 304 - 20 gauge



BATHROOM PARTITIONS



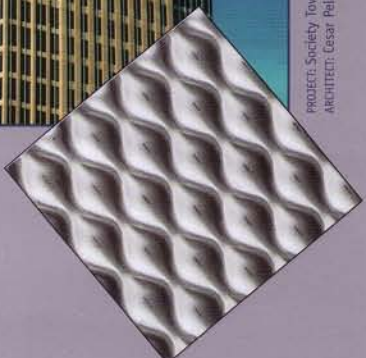
PRODUCT: Column Covers, Pattern 5-WL [top] 2-FL [bottom]
ALLOY: Stainless Steel - type 304 - 14 gauge

CURTAIN WALL ROOF



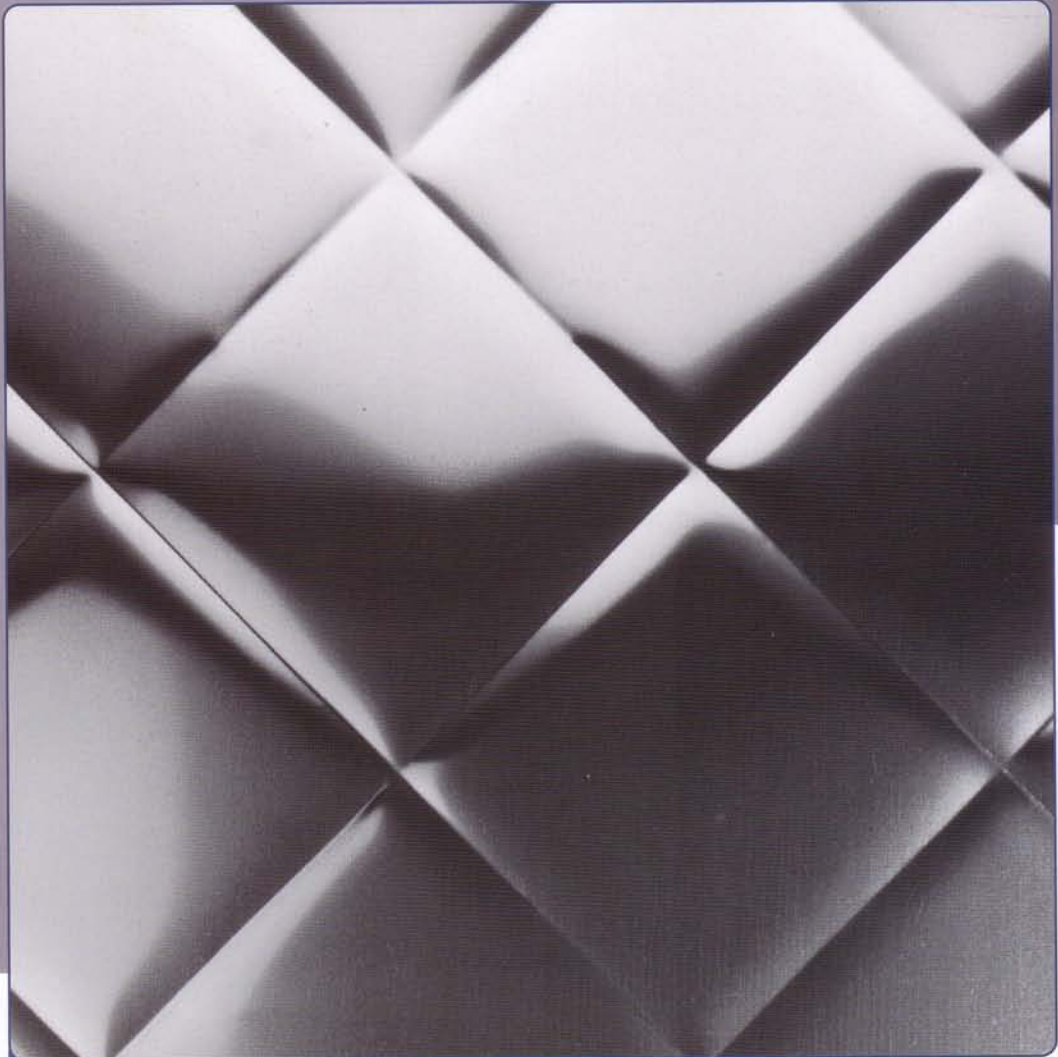
PROJECT: Society Tower - Cleveland, OH
ARCHITECT: Cesar Pelli and Associates, Architects

PRODUCT: Curtain Wall,
Pattern 6-WL
ALLOY: Stainless Steel - type 304
- 14 gauge



COLUMN COVERS

3" QUILT PATTERN



3-QLT®

SPECIFICATIONS

- 36" and 48" Wide x Your Length
- .024" and .029" (24 & 22 ga.) Available
- 3" and 6" Quilt Patterns Available
- Stainless Steel #4 Satin and Bright Annealed in Stock



UP TO 36" WIDE PATTERNS



2-WL®



1-CS®



1SLG®



3-ND®

U.S. Standard Gauges /
Nominal Thickness in Inches

10/.141

11/.120

12/.105

14/.075

16/.060

18/.048

20/.036

22/.029

24/.024

26/.018

28/.015

32/.010



6-SL®



1-CS BRASS



1-HM / SS



1-HM COPPER

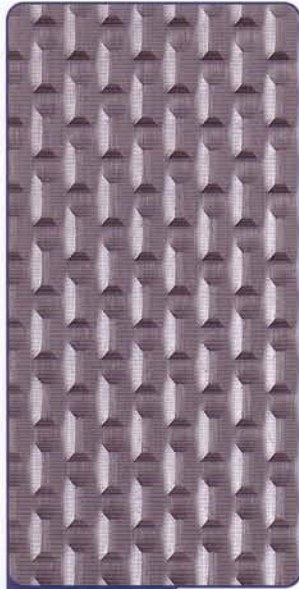
PATTERN SPECIFICATIONS

36"	PATTERN:	Max Thickness Stainless		Max Thickness Other Metals	
	2-WL	0.015" - 0.024"	0.38mm - 0.61mm	0.008" - 0.025"	0.20mm - 0.64mm
6-SL	0.018" - 0.060"	0.46mm - 1.52mm	0.010" - 0.125"	0.25mm - 3.18mm	
1-CS	0.018" - 0.075"	0.46mm - 1.91mm	0.010" - 0.080"	0.25mm - 2.00mm	
1-SLG	0.010" - 0.048"	0.25mm - 1.22mm	0.010" - 0.060"	0.25mm - 1.52mm	
3-ND	0.018" - 0.036"	0.46mm - 0.91mm	0.010" - 0.040"	0.25mm - 1.02mm	
1-HM	0.010" - 0.036"	0.25mm - 0.91mm	0.010" - 0.040"	0.25mm - 1.02mm	

AVAILABLE
IN SHEETS
UP TO 36"
OR 914mm



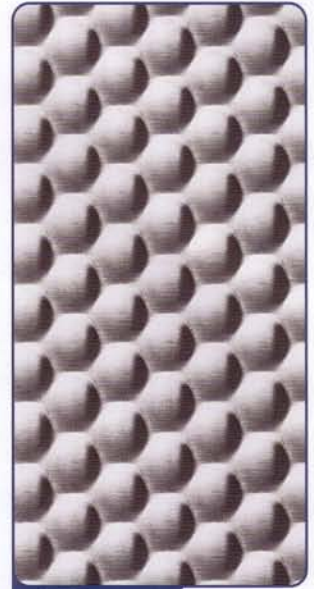
5-WL®



4-LB®



2-FL®



6-HC®

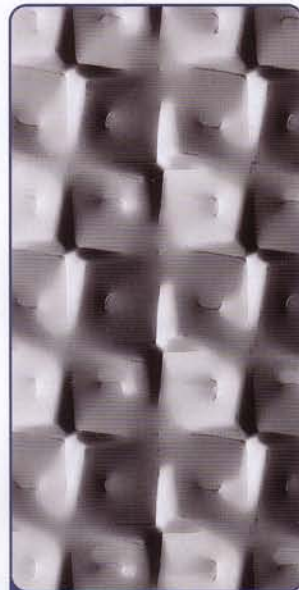
*available 60" wide



1-NA®



1LTH®



1-RL®



6-WL®

PATTERN SPECIFICATIONS

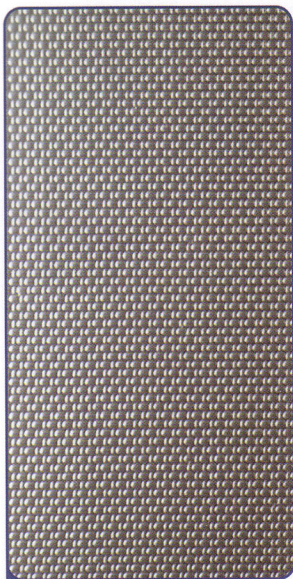
PRIME SIDE = BUMPS UP

NON-PRIME SIDE = BUMPS "DOWN"

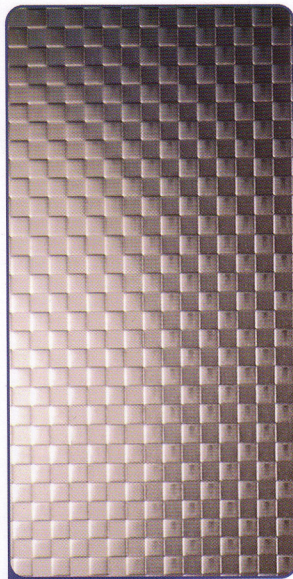
48"	PATTERN:	Max Thickness Stainless		Max Thickness Other Metals	
	6-HC/6-WL	0.018" - 0.105"	0.46mm - 2.67mm	0.010" - 0.125"	0.25mm - 2.29mm
1-LTH	0.010" - 0.060"	0.25mm - 1.52mm	0.010" - 0.090"	0.25mm - 2.29mm	
1-RL	0.018" - 0.125"	0.46mm - 3.18mm	0.018" - 0.125"	0.25mm - 3.18mm	
2-FL	0.024" - 0.125"	0.61mm - 3.18mm	0.020" - 0.125"	0.51mm - 3.18mm	
5-WL	0.010" - 0.090"	0.25mm - 2.29mm	0.008" - 0.080"	0.20mm - 2.03mm	
4-LB/1-NA	0.010" - 0.075"	0.25mm - 1.91mm	0.008" - 0.080"	0.20mm - 2.03mm	

AVAILABLE
IN SHEETS
UP TO 48"
OR 1219mm

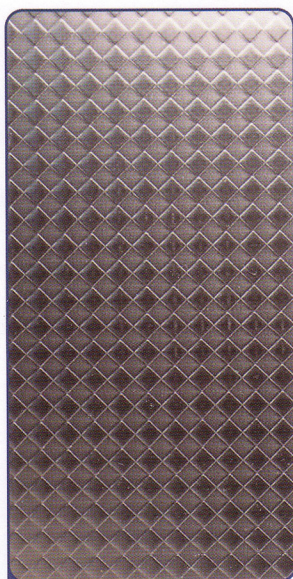
EMBOSSED PATTERNS AND SPECIALTY FINISHES



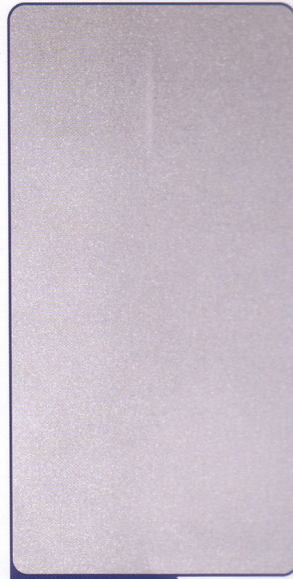
LINEN



SQUARES

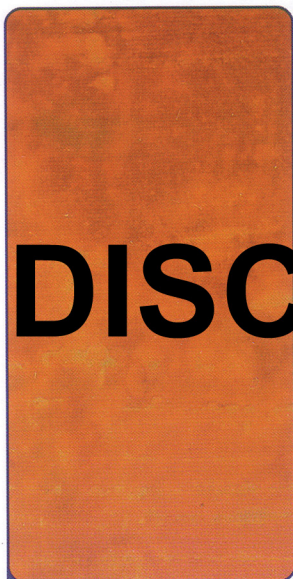


RHOMBUS



MATTE FINISH

SEE WEBSITE FOR PATTERN SPECIFICATIONS www.rigidized.com



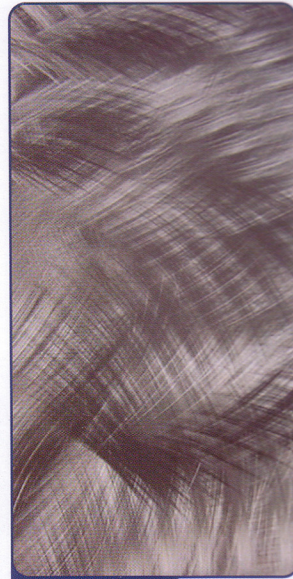
SANTA FE



CHIMAYO



TAOS



RANDOM SWIRL

SPECIALTY FINISHES ON CARBON STEEL

Best suited for interior applications, these rustic finishes are protected with a clear polyurethane coating.



PROJECT: Baang Restaurant - Long Island, NY
PRODUCT: Wall Panels, Pattern 1-CS
ALLOY: Copper

RIGIDIZED® TREAD PLATE



RTP



RSS-2



RSS-3

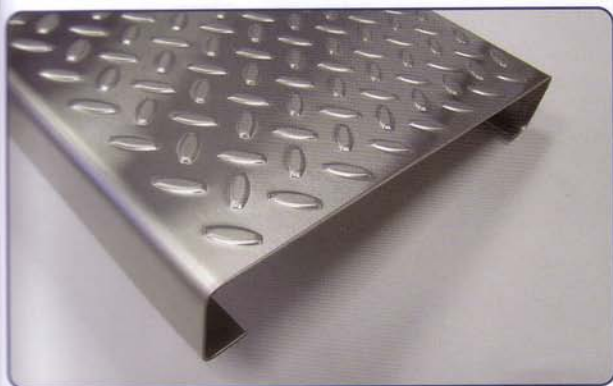


RTP KNURL

UP TO 60" WIDE x 144" LENGTH

SEE WEBSITE FOR PATTERN SPECIFICATIONS

RIGIDIZED FLOOR RTP with
KNURL max size 36" x 48"



RIGIDIZED® TREAD FLOOR PLANK

Rigidized Tread flooring and planks feature a surface with the Rigidized RTP KNURL, providing slip resistance in all directions.

SLIP COEFFICIENT OF FRICTION: 1.05 COMPLIANT WITH ASTM SPECS

PLANK DIMENSIONS:

- 7", 10" and 12" widths
- length up to 120"
- 1/2" [minimum] or 2" [standard] channel height



PROJECT: Boston Beer Works
PRODUCT: Panels, Pattern RTP Painted/Highlighted
ALLOY: Aluminum



STAINLESS STEEL FINISHES

NO. 2B UNPOLISHED FINISH [ROLLED]

A bright finish commonly produced in the same way as No. 2D [Cold rolling to the specified thickness, followed by annealing and descaling - may include a light roll pass through dull rolls] except that the annealed and descaled sheet receives a final light cold roll pass on polished rolls. This is a general purpose cold-rolled finish and is more readily polished than the No. 1 or No. 2 finishes.

NO. 4 POLISHED FINISH

A general purpose bright polished finish obtained with a 120-150 mesh abrasive, following initial grinding with coarser abrasives.

NO. 6 POLISHED FINISH

A soft stain finish having lower reflectivity than No. 4 finish. It is produced by Tampico brushing the No. 4 finish in a medium of abrasive and oil.

NO. 7 POLISHED FINISH

A highly reflective finish produced by buffing a surface which has been first finely ground with abrasives, but "grit" lines are not removed.

BRIGHT ANNEALED FINISH

A very reflective "cloudy" mirror finish

NO. 8 POLISHED FINISH

The most reflective finish commonly produced. It is obtained by polishing with successively finer abrasives, then buffing extensively with a very fine buffing compound to remove essentially all "grit" lines.

CUSTOM STAINLESS STEEL FINISHES

RIGIDIZED LONG GRAIN FINISH

A rolled-on "hairline" finish most like #4 featuring a more pronounced grit line.

RIGIDIZED NON-DIRECTIONAL FINISH

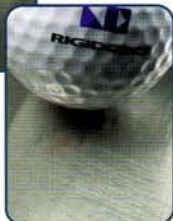
A hand-applied uniform random orbital finish, often referred to as "angel hair".

RIGIDIZED MATTE FINISH

A rolled-on finish with a bead-blast look, without the flatness issues of bead blast.



NO. 2B



NO. 4



NO. 6



NO. 7



NO. 8



BRIGHT ANNEALED



LONG GRAIN



NON-DIRECTIONAL



MATTE